

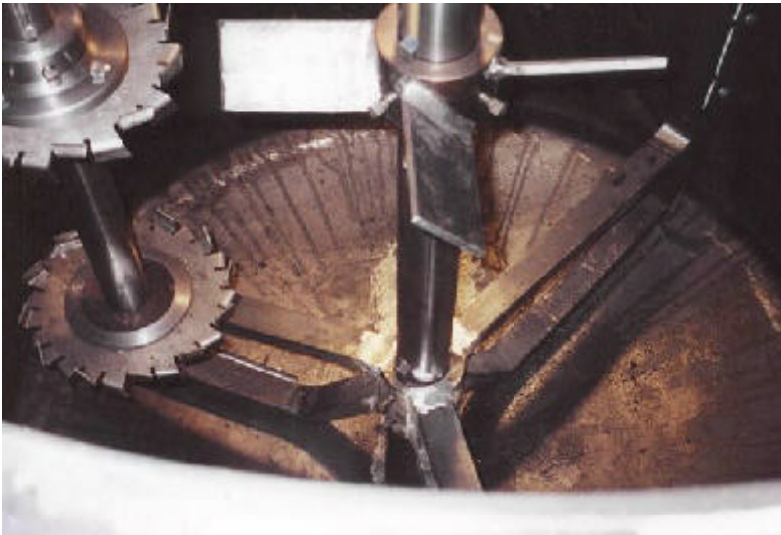
PASTE WOOD STAIN PROCESS SYSTEM

SERIES 4020
MODEL DHL-10V-5V-100-CS

TANK MOUNTED, VARIABLE SPEED, MIXER/DISPERSER

HIGH VISCOSITY APPLICATION
DUAL RANGE, DUAL MOTORS,
TWO MIXING SHAFTS,
VARIABLE HIGH SPEED BLADES
VARIABLE LOW SPEED ANCHOR
TOP DOWN FLOW TURBINE

10 HP variable high speed disperser
600 to 1800 rpm
(2) hsf-08 high shear blades
5 HP variable low speed mixer
20 to 60 rpm
3-blade anchor turbine/scrapers
4-blade top turbine (down flow)
150 gallon (max) tank, F&D bottom,
hinged covers, drain trough
Working platform with steps



SKIDDED SYSTEM

The overall system may be placed, integrated and tested on a skid for fast turnaround, lower costs, and added flexibility.

These models may be supplied with vacuum/pressure seals, various corrosion resistant materials, and heating/cooling capabilities.



DANTCO MIXERS CORPORATION
9 OAK STREET
PATERSON, NJ 07501-3013
973-278-8776, FAX 973-278-1538
EMAIL sales@dantco.com, WEB <http://www.dantco.com>